

Brussels, December 2nd, 2020

Dear Sister Suguna,

Re: Memorandum of understanding "Avanigadda Eco club"

WHEREAS

A. Environmental crisis is a global problem. The vulnerability and exposure of humans to climate change varies from one economic sector to another and will have different impacts in different countries. Wealthy industrialised countries, which have emitted the bulk of CO2 into the atmosphere, have more resources and so are the least vulnerable to global warming. Economic sectors that are likely to be affected include agriculture, human health, fisheries, forestry, energy, insurance, financial services, tourism, and recreation. The quality and quantity of freshwater will likely be affected almost everywhere. Some people can be particularly at risk from climate change, such as the poor, young children and the elderly.

B. Social Ecology Education Fund ("SEEF") is a micro impact fund. It aims to accompany vulnerable communities in transition countries in their social and ecological emancipation. That is done through responsible education, based on respect for the diversity of all people and for their environment. SEEF adheres to the Sustainable Development Goals towards 2030 of the United Nations.

C. SEEF offers educational with occasional ancillary financial support in countries like India where economic growth and changing consumption patterns reinforce inequalities and ecological stress.

The objective of the Fund is to locally set up small-scale educational initiatives or to assist existing organisations. The micro fund cooperates with partners that are active in education, gender equality, social or environmental policy, microfinance, corporate social responsibility or with any other relevant partner who can contribute to the achievement of its objectives.

Efforts to prepare the children as eco-ambassadors for the future will come to reality as young are ventured into training for protection and promotion of the environment, including its people.

Social Ecology Education Fund vzw

www.social-ecology-education-fund.org

Koopliedenstraat 16c Box 13 1000 Brussels Belgium ● RPR Brussels 0735.364.522

+32 497 48 53 31 ● + 32 496 642 695 ● TRIODOS BANK BE60 5230 4855 7770

info@social-ecology-education-fund.org

THEREFORE

Referring to your request of Nov 12th, 2020 and to our subsequent discussions, we are happy to confirm our commitment to an *Avanigadda Eco Club* project under the terms set out below.

Goal:

Enabling the young to grow nature- and social friendly according to the attached project charter.

Objectives:

1. Imparting climate-change education with social consequences to the young
2. Helping the young to truly understand *inclusivity* and have empathy towards all living beings through workshops and competitions.

Target group:

Children between the age group of 8-15

Geographical location:

This pilot will be implemented in *Avanigadda* in Krishna District in Andhra Pradesh, based on the results it will be extended to *Agriripalli Mandal* in Krishna District.

Methodology:

A weekly special class (2 to 3 hrs.) animated by staff members specifically dedicated to the project.

Project period:

January 2021- December 2025 (subject to further extension)

Assistance offered by SEEF:

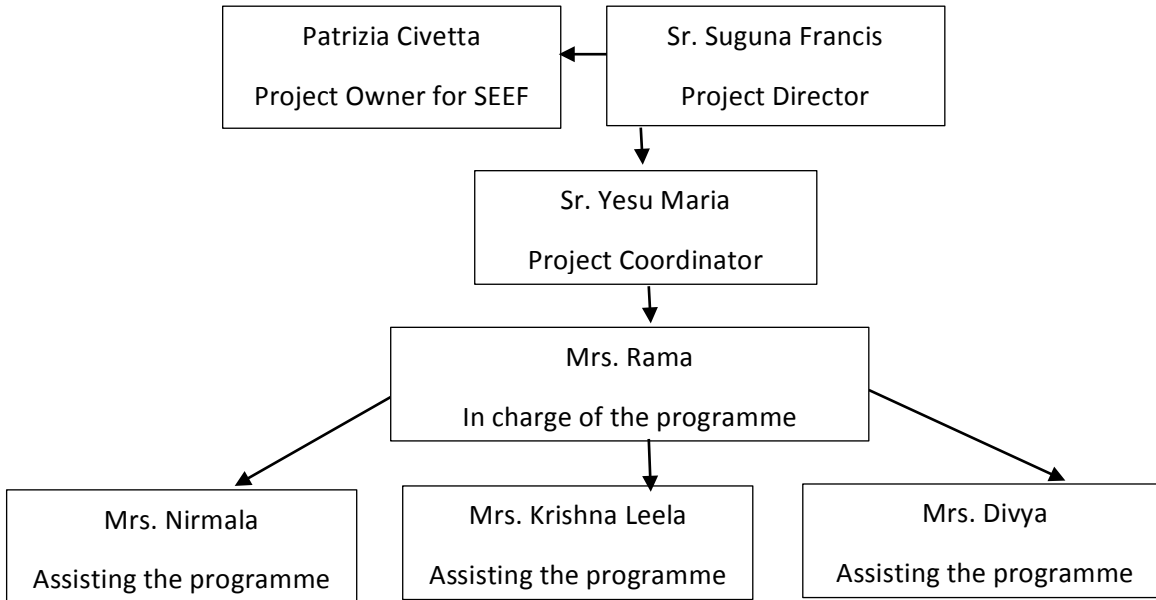
1. Manuel to guide workshops
2. Set of curriculum to have regular classes
3. Guidelines to assess the understanding of the children
4. Monthly feedback and coaching sessions with staff

Partnership:

SEEF will act as your exclusive partner for educational support. Any other parties or persons involved in the program and its promotion will be priorly approved.

Project quality:

A. Project governance



B. Implementation

A staff (Mrs Rama) is solely in charge of the project. She is assisted as and when needed by other 2 staff. They are responsible to implement the project successfully.

C. Monitoring

Sr. Yesu Maria, the director of Social Work Center at Avanigadda will monitor the project every week. She renders her assistance whenever it is necessary.

Sr Suguna Francis will monitor the project once in 3 months (after Covid).

D. Reporting

Mrs. Rama gives weekly report to Sr. Yesu Maria. Sr. Yesu Maria will consolidate and send the monthly report to Sr. Suguna Francis. Sr. Suguna Francis takes the responsibility of present the report it to SEEF, that might request group feedback sessions per videoconference.

E. Evaluation

Assessment of the students is done once in a month with a well-prepared format based on the curriculum given.

Once a year, a more global evaluation of the project is done by Sr. Suguna and someone from outside assess the development of the project. It is also a time to evaluate the failures, loop-holes and the steps for improvement.

F. Quality Supervision criteria

A. Person based (staff and children)

Quality of reporting and periodic assessment forms submitted

B. Action based

Balance Scorecard to Project Owner with qualitative and quantitative KPI's related to quantitative nr of actions, participants, audience + qualitative standards

Legal status:

Social Ecology Education Fund is not a recognized NGO or equivalent under the laws of India or Belgium. It only works with own and third party funds, qualified as donation money for the exclusive benefit of the diocese.

For the implementation of the program, it will not enter into any legally binding agreement in India and cannot be held liable for any conflicts or incidents. In return for the support, the counterparty undertakes to meet all legal requirements and consequences related to the projects and free up adequate resources.

Communication:

The project will be presented towards third parties as an exclusive collaboration between both parties, taking into account the above.

Termination:

We reserve the right to invoke early termination events, should the program not meet our requirements in terms of scope, budget, time or quality.

If you agree to the terms set out above, we kindly ask you mark your approval before 31 December 2020.

Looking forward to a fruitful cooperation,

Frederick De Gryse, Managing Director
Patrizia Civetta, Program Director

SEEF Project Charter

1. Preserve the beauty of the earth and its habitants.
2. Limit useless consumption of natural resources as water and gas or electricity and precious materials.
3. Avoid the use of plastic, toxic or polluting components.
4. Limit, collect, recycle waste and reuse materials.
5. Use natural ingredients for homemade food instead of consuming industrial products.
6. Prefer locally manufactured goods and services instead of letting them come from multinationals far away
7. Respect the equality and the diversity of all people and treat them correctly.
8. Give each person access to education and do not allow money, origin, religion or disabilities to be an issue.
9. Ensure that the working conditions and remuneration of co-workers and suppliers are fair.
10. As responsible citizens, give every day the best of us to make the earth a good place to live together.

The educational program promotes ecological and humanistic values in a pluralistic context, whereby children are called as future preservers of the earth and its habitants. It is set up in English and aims to stimulate language skills, according to the learning by playing method.

The broader program is based on theoretical and practical development of the following skills:

I. Core school focus:

1. "The future Linguist in me"
2. "The future Mathematician in me"
3. "The future Scientist in me"

II. Complementary tuition focus:

4. "The future Artist in me"
5. "The future Group Therapist in me"
6. "The future Ecologist in me"
7. "The future Responsible Citizen in me"

Teachers keep a detailed monitoring dashboard and daily report about the activities the activities performed. Teachers and support staff commit to the Ecologic – Organic – Fair Trade principles, meaning:

1. Limitation of the ecological footprint.
2. Local suppliers for services and goods are preferred above others.
3. Natural materials and manufactured goods are preferred above industrialized ones.
4. Strong commitment to avoid the use of plastic, toxic or polluting school material.
5. Fruit, organic and healthy homemade snacks and drinks instead of industrial sweets.
6. Services or goods resulting from fair trade with decent remuneration, excluding children or oppressed groups.